

SpectraBox ISM

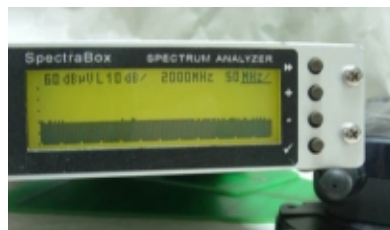
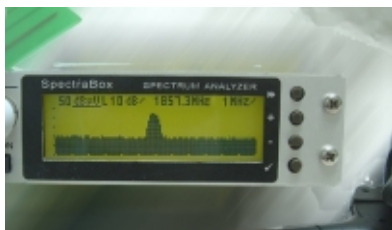
Portable Spectrum Analyzer 1500 - 2500MHz



DCS 1800
PCS 1900
DECT
UMTS
WLAN
Bluetooth

The complete spectrum range of wireless communications from L to ISM-band is captured by this analyzer.

This multi-purpose instrument handles numerous applications: From precision field strength measurements to wireless video bug detection.



The SpectraBox Family:

- SpectraBox / SAT & DX
950 - 2150MHz
- SpectraBox / ISM
1500 - 2500MHz
- SpectraBox / HF
0.1 - 40MHz

Another step in evolution ...

Well equipped with all typical characteristics of the SpectaBox SAT DX this model has an extended frequency range up to the important ISM-Band (2400-2500MHz).

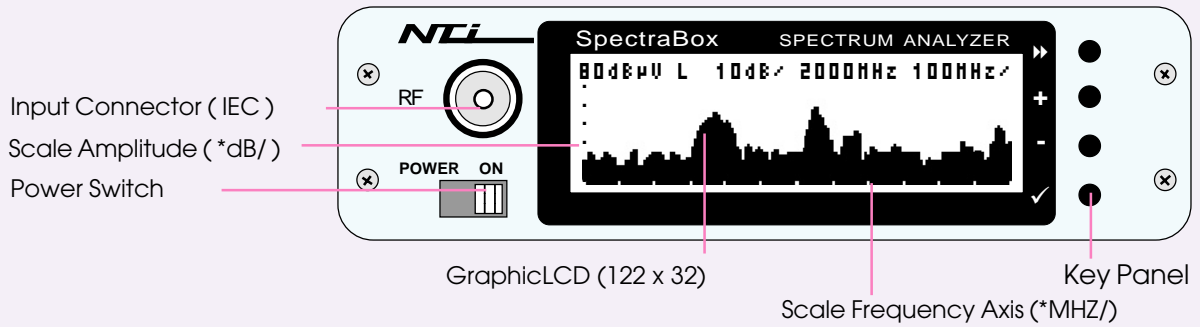
Here we can find rapid developments of different wireless transmission technologies during the last years. The wide tuning range of 1000MHz allows also interesting applications in the L-Band starting with 1500MHz.

Small, handy and compact.

Nearly the same size as a video cassette and a low weight of hardly 700g make the device to an ideal companion for installation, maintenance and service applications.

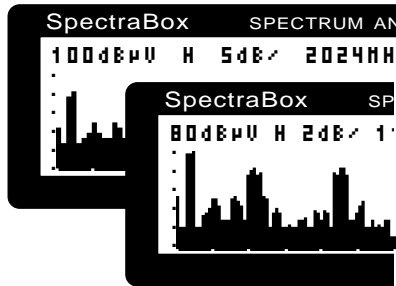
A built-in accumulator allows portable operation for many hours. The frequency spectrum and additional informations are visible on a back-lighted graphic liquid cristal display.

**Small; but excellent:
(original size)**



Adaptable ...

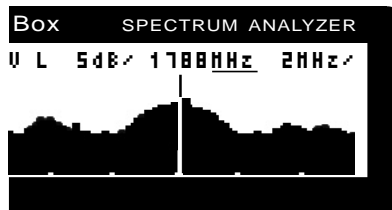
Amplitude resolution is selectable in 2-5-10dB steps.
According to the maximum input level two different input level ranges (LOW/HIGH) are also selectable.
Within the chosen level range the related reference level can be varied in 10dB steps.



Integrated Zoom ...

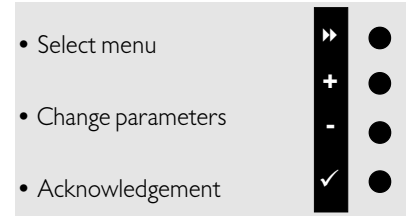
After switching on the display shows first a complete spectrum scan.
An extra frequency cursor function allows to mark a certain frequency.
Starting with the cursor frequency a frequency range of interest can be zoomed continuously.

This makes an accurate analysis of narrow band signals easier.



Simple Operation ...

Only four push buttons are required to control the instrument:



The chosen parameters are displayed above the spectral display.
For pre-converter operation it is possible to display the correct input frequency after entering the related LO-frequency.

Technical Data

Input Frequency Range:	1500 - 2500MHz	Graphic LCD:	122 x 32Pixels
Input Connector (Impedance):	IEC / 75Ω	PC Serial Interface:	RS 232(DS-9)
Input Level Ranges (LOW/HIGH):	20/30-80 & 50-100dBuV (DX MODE OFF)	Measuring Principle: Homodyne/Direct Conversion	
Amplitude Scaling/DIV:	2-5-10dB	Dimensions:	113 x 32 x 170mm
Frequency Scaling/DIV:	Full-100-50-20-10-5-2-1-0MHz	Weight excl. Accumulator:	0.65kg
Sweep Time (Complete Scan):	3.5s - 0.4s (Full - 2MHz/DIV)		
Measurement Error:	max. +/- 3dB		
Resolution Bandwidth:	200KHz / 2MHz		
LO-Generated 2nd RF-IN Harmonic Rejection:	min. 35dBc		
Supply:	9 - 12V / 300mA (2.1mm DC-Plug)		

- Optional Accessories:**
- Plug-Power Supply
 - Auto Resume firmware stores last selected parameters automatically

Christian Mass: NTi SpectraBox SAT - TELE-satellite International 10-11/2002

- Spectrum monitoring & signal identification
- Measurement of input level; cross polarity separation & C/N
- Detecting signal & interference sources or leakage
- Broadband measurement of insertion gain or loss

